



ZENATOR
WALKDOWNCAPTURE

ZENATOR
CHECK

Making the Invisible, Visible Performance You Can Trust

Not so long ago, many people rightly complained that Commissioning & Start-Up (CSU) was *invisible*, a black art and a black box of complexity, with processes that were understood by only a few and not codified.

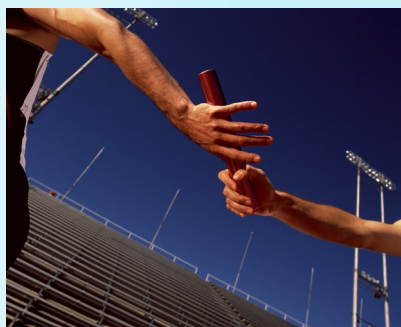
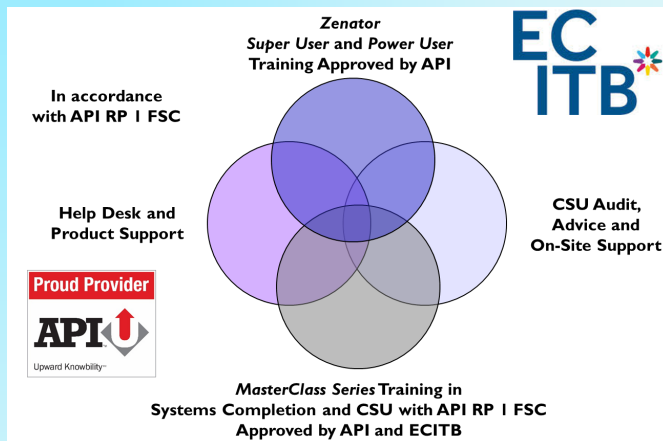
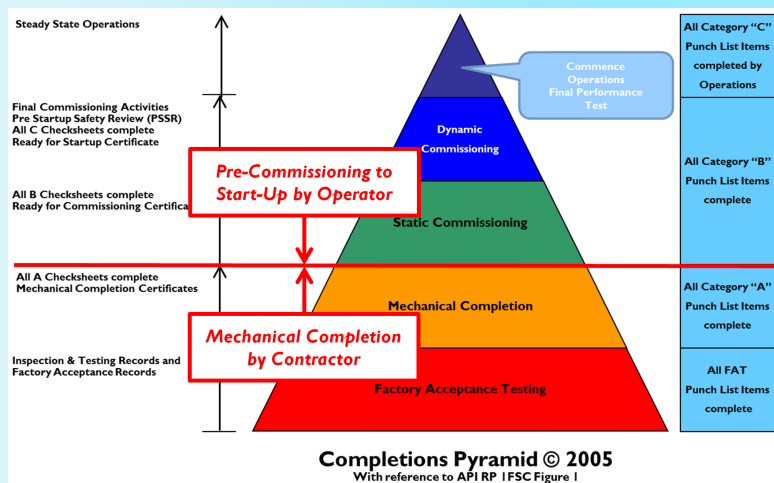
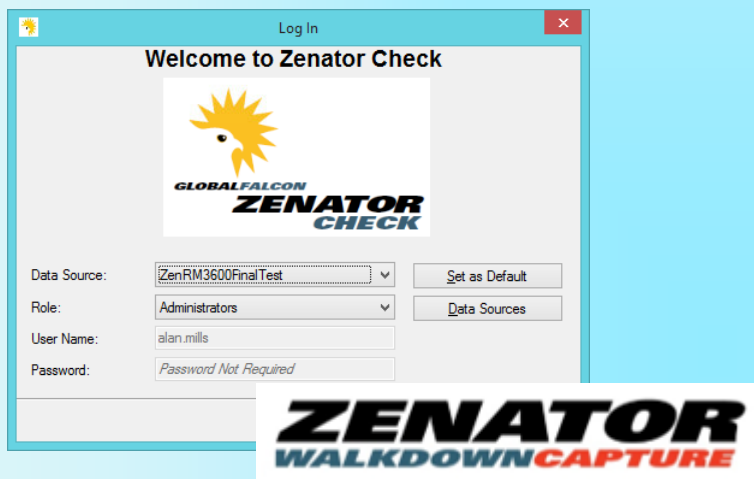
Zenator helped to change all of that. Before, people were trying and failing to manage processes they weren't measuring.

Zenator makes what was once invisible, *visible*, putting you in complete control. **Zenator** is configured in accordance with API RP 1 FSC, the industry standard on how projects should be completed.

Costing from \$3* per day per user, **Zenator** helps you control, track and manage each project. Quite simply, **Zenator** is the way to go.

* for 5 users over one month

**Zenator with Walkdown Capture is the perfect partnership
Through Systems Completions, Commissioning and Start-Up to Final Handover.**



Global Falcon Americas Inc
Houston, Texas, USA

Tel: +1 713 370 8848

Falcon Global Ltd
Norwich, Norfolk, UK

Tel: +44 7725 059711

mail@falconglobal.net <https://falconglobal.net>

Developed and Distributed by Falcon Group





Zenator — Flexible, Adaptable Making the Invisible, Visible

Expert in Systems Completion since 2000

Performance You Know You Can Trust

Excellence in Workflow and Mobile Technology

ZENATOR WALKDOWNCAPTURE

See Walkdown Capture in action:

<https://youtu.be/xvC4qb4Prhw>

Global Falcon - Zenator Walkdown Capture for Tablets - Add PLI

Save Capture Browse

Path: 055 : Condensate Coalescer/055.10

Tag: PBA-2720

Activity Type: Pre-commissioning Walkdown

Discipline: Mechanical

Fault: ~: Erosion detected on pump impeller

✓ Rigging support and mechanical handling required
Replacement impeller, seals and fasteners required as vendor manual and parts list.
Vendor assistance required.

Listed By: PLI Originator

Action By: PLI Action Party

Accepted By (Contractor):

Accepted By (Client):

Date Raised: 09 Nov 2020

Date Cleared:

Date Accepted (Contractor):

Date Accepted (Client):

Status History:

Name: ~29438~1-20201109131637WD

Description: PBA-2720

Source:

040.103 : Compressor & Gas

040.104 : Compressor & GT A

050.101 : Frm Exist Manifold to SU

050.102 : Crossover to Exist FG He

050.103 : Frm SDV0050 to ds GT F

050.104 : Frm Exist Header to New

050.105 : Frm Exist FG Scrubber to

055.102 : Frm Exist Condensate Co

CAL-2730: Blower for PBA-2730 A

PBA-2720: Condensate Pump 1

MAY-4100: Condensate Surge Dr

ESDV-4101: MAY-4100 SURGE D

ESDV-4100: MAY-4100 SURGE D

ZBE-2720: Seal Pressure Enhance

HBG-2721: Seal System Cooler fo

Add PLI Tag Info PLI Info Expand Cancel

Save Delete Cancel

040.103 : Compressor & Gas

040.104 : Compressor & GT A

050.101 : Frm Exist Manifold to SU

050.102 : Crossover to Exist FG He

050.103 : Frm SDV0050 to ds GT F

050.104 : Frm Exist Header to New

050.105 : Frm Exist FG Scrubber to

055.102 : Frm Exist Condensate Co

CAL-2730: Blower for PBA-2730 A

PBA-2720: Condensate Pump 1

MAY-4100: Condensate Surge Dr

ESDV-4101: MAY-4100 SURGE D

ESDV-4100: MAY-4100 SURGE D

ZBE-2720: Seal Pressure Enhance

HBG-2721: Seal System Cooler fo

055 : Condensate Coalescer/055.10

PBA-2720

Pre-commissioning Walkdown

Mechanical

~: Erosion detected on pump impeller

✓ Rigging support and mechanical handling required
Replacement impeller, seals and fasteners required as vendor manual and parts list.
Vendor assistance required.

Listed By: PLI Originator

Action By: PLI Action Party

Accepted By (Contractor):

Accepted By (Client):

Date Raised: 09 Nov 2020

Date Cleared:

Date Accepted (Contractor):

Date Accepted (Client):

Status History:

Name: ~29438~1-20201109131637WD

Description: PBA-2720

Source:

040.103 : Compressor & Gas

040.104 : Compressor & GT A

050.101 : Frm Exist Manifold to SU

050.102 : Crossover to Exist FG He

050.103 : Frm SDV0050 to ds GT F

050.104 : Frm Exist Header to New

050.105 : Frm Exist FG Scrubber to

055.102 : Frm Exist Condensate Co

CAL-2730: Blower for PBA-2730 A

PBA-2720: Condensate Pump 1

MAY-4100: Condensate Surge Dr

ESDV-4101: MAY-4100 SURGE D

ESDV-4100: MAY-4100 SURGE D

ZBE-2720: Seal Pressure Enhance

HBG-2721: Seal System Cooler fo

Add PLI Tag Info PLI Info Expand Cancel

Save Delete Cancel

040.103 : Compressor & Gas

040.104 : Compressor & GT A

050.101 : Frm Exist Manifold to SU

050.102 : Crossover to Exist FG He

050.103 : Frm SDV0050 to ds GT F

050.104 : Frm Exist Header to New

050.105 : Frm Exist FG Scrubber to

055.102 : Frm Exist Condensate Co

CAL-2730: Blower for PBA-2730 A

PBA-2720: Condensate Pump 1

MAY-4100: Condensate Surge Dr

ESDV-4101: MAY-4100 SURGE D

ESDV-4100: MAY-4100 SURGE D

ZBE-2720: Seal Pressure Enhance

HBG-2721: Seal System Cooler fo

Performance Gains and Productivity Improvements over Multiple Projects

Global Falcon - Zenator Check - 3.3.7.0 - 17 Aug 2018

File Edit View Document Generation Maintenance Tools Administrator Management Help

Data Source: VS4_Alan-Demo3600

Project Groups Refresh Project Back Forward

Views

Number Name Status

System Group

020 Communication

035 Production & Test Separators

040 Gas

050 Fuel

055 Cond

060 Close

065 Oper

085 Project

090 System Group

105 Area

125 Sub System

Legend: Node Type Icons

Node Type

A ITR

B ITR

C ITR

V ITR

Area ITR

Bulk A ITR

Bulk B ITR

Instrument Loop ITR

Electrical Circuit ITR

Piping Test Pack ITR

P ITR

Certificate or Notice

Management of Change

Punch List Item

Inhibit

Isolation

WBS Element

Activity

Import Punch List Items

Project: ~

Status: ~

Device Status Project

WDC-DEMO-02 ~

WDC-DEMO-03 ~

WDC-DEMO-DEVICE02 Prepared Sabre Lite Demo

TEST01-NEW Prepared Execution Phase - Co

Robert-WDC Prepared Sabre Lite Demo

VSSAPI

GYVSSAPI

FGLWDCRM

GFA-AJM-TAB-003

Shandood

desktop-10kdis

DESKTOP-QTN8HF

R2

Importing Punch List Items Completed

No of PLIs Inserted: 1

No of PLIs Updated: 0

No of Faults Inserted: 1

No of Faults Updated: 0

No of Images Inserted: 2

OK

Importing Images

Import Punch List Items Cancel

MBF-2810-M-01A_V1

PL01030: System to be leak tested using Nitrogen-Hydrogen.

MBF-2810~29333~1-20200801115421WD

MBF-2810~29333~2-20200801115431WD

MBF-2810~29333~3-20200801115510WD.jpg

MBF-2810~29333~4-20200801115527WD.jpg

MBF-2810~29333~5-20200801120557WD

MBF-2810~29333~6-20200801120604WD

NAP-2850

PL01039: ACCESS HATCHES TO BE PROVIDED

~29384~1-20200927085530WD

NAP-2850~19385~2-202010201140615WD

PL01047

~29428~1-20201028T104712WD

ZBM-2851

PL01045

~29422~1-20201024152150WD

~29422~2-20201024152158WD

050.104: Frm Exist Header to New Power Generators

ESDV-2400

PL01046

~29423~1-20201024152342WD

~29423~2-20201024152351WD

050.105: Frm Exist FG Scrubber to LP&HP Relief HDR

FI-6020

RO-6023

WDC Z3600 video

Status: Project Group Sort Order: Number Selected Node: Sabre Lite Demo Node ID: 500 Node Type: Project