



# Zenator Live!

## High Availability Hosted Solution



**Train, Operate — Pay As You Go!**  
**Performance You Can Trust — Reliable, Secure, Affordable**

No IT overhead, No hassle. Just look at what you get with *Zenator Live!*

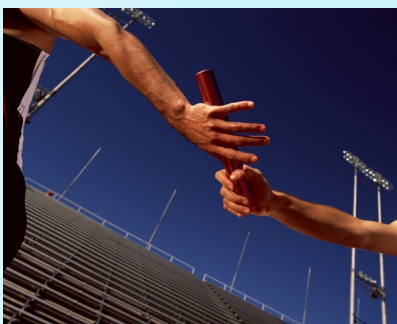
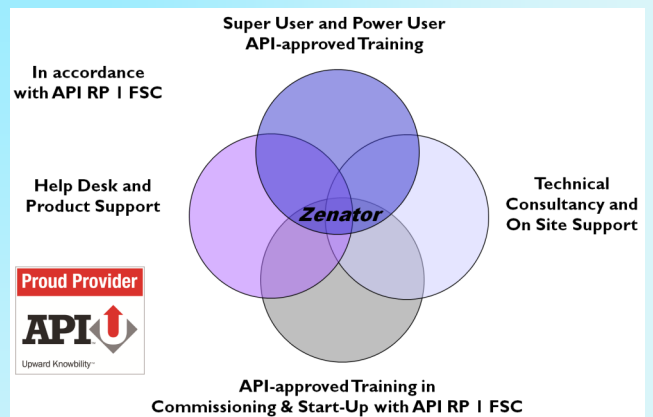
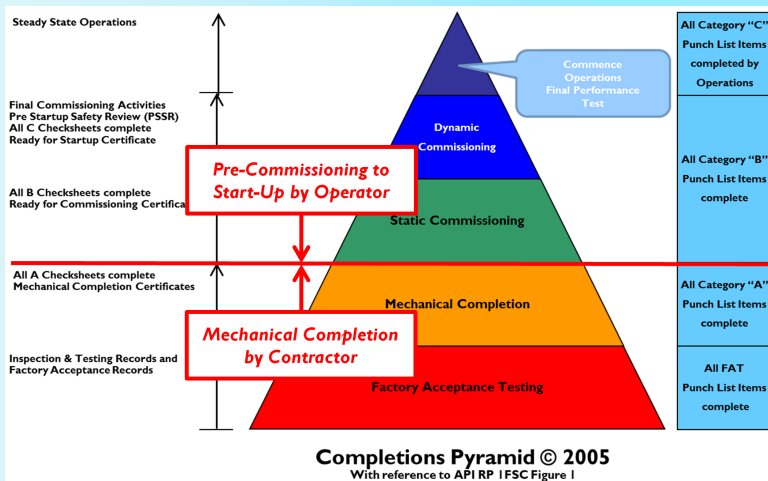
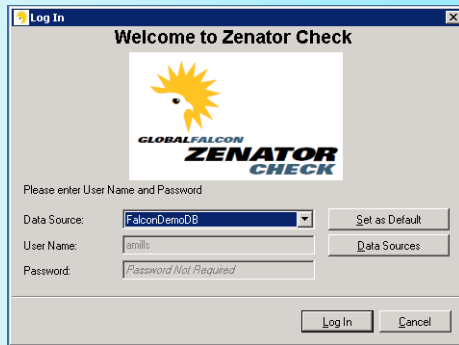
*Zenator Live!* is the hosted solution from Falcon Global that radically reduces your total cost of ownership (TCO). Whether your project is a new-build facility, a brownfield Shutdown/Turnaround or steady-state Production, you have complete control with full access to all project data. *Zenator Live!* is the way to go.

By default, *Zenator Live!* is configured in accordance with API RP 1 FSC, the industry standard on how projects should be completed.

From as little as \$40 per day per user, use *Zenator Live!* to help you control, track and manage each project.

Access *Zenator Live!* by Citrix — No IT issues. No major budgetary considerations.

*Zenator Live!* eases you through Systems Completions, Commissioning and Start-Up to Final Handover.



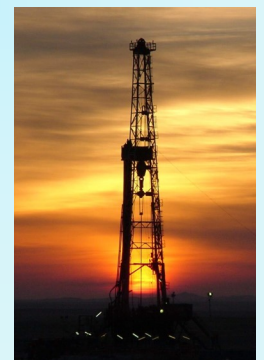
**Global Falcon Americas Inc**  
**Houston, Texas, USA**

**Tel: +1 713 370 8848**

**Falcon Global Ltd**  
**Norwich, Norfolk, UK**

**Tel: +44 7725 059711**

**mail@falconglobal.net www.falconglobal.net**





# Zenator Live!



## An Even Smarter Way of Working

Expert in Systems Completion since 2000  
Performance You Know You Can Trust

### Excellence in Reporting

Report Generated on : 11-Jul-2015

#### ITR STATUS SUMMARY

Discipline	Total Tags	Quality Inspection Test Records (QITRs)						Mechanical Completion Check Sheets ("A" Check Sheets)						Static Commissioning Check Sheets (SC Check Sheets)						
		Populated		Completed		Balance		Populated		Completed		Balance		Populated		Completed		Balance		
		Added Today	Total (Cummm)	Completed Today	Total (Cummm)	% Complete	Remaining	Added Today	Total (Cummm)	Completed Today	Total (Cummm)	% Complete	Remaining	Added Today	Total (Cummm)	Completed Today	Last 7 days Total (Cummm)	% Complete	Remaining	
Civil	4681	0	0	0	0	N/A	0	7394	12	6472	87.53%	922	0	0	0	0	0	N/A	0	
Electrical	40917	1	19463	22	12948	66.53%	6515	0	2644	0	2644	100.00%	0	5308	3	41	1897	35.74%	3411	
HVAC	1247	0	3245	56	2515	77.50%	730	0	356	0	356	100.00%	0	406	0	3	165	40.64%	241	
Instrument	64145	12	26253	86	16769	63.87%	9484	0	1639	0	1639	100.00%	0	13710	12	68	3526	25.72%	10184	
Insulation	7	0	0	0	0	N/A	0	0	2686	6	315	11.73%	2371	0	0	0	0	N/A	0	
Mechanical	1616	0	6337	0	5979	94.35%	358	0	1048	0	394	37.60%	654	0	1552	0	14	316	20.36%	1236
Piping	9148	0	0	0	0	N/A	0	1	8106	23	4983	61.47%	3123	0	15	0	15	100.00%	0	
Safety	588	0	0	0	0	N/A	0	0	475	0	157	33.05%	318	0	191	0	5	2.62%	186	
Telcom	7462	0	4464	50	1734	38.84%	2730	0	30	0	30	100.00%	0	0	1187	0	1	65	5.48%	1122
<b>Grand Total</b>	<b>129811</b>	<b>13</b>	<b>59762</b>	<b>214</b>	<b>39945</b>	<b>66.84%</b>	<b>19817</b>	<b>1</b>	<b>24378</b>	<b>41</b>	<b>16990</b>	<b>69.69%</b>	<b>7388</b>	<b>0</b>	<b>22369</b>	<b>15</b>	<b>127</b>	<b>5989</b>	<b>26.77%</b>	<b>16380</b>

#### PUNCH LIST SUMMARY STATUS

Discipline	Category "A" Punch List Items (Faults to be completed before MC of a Sub-System)						Category "B" Punch List Items (Faults to be completed before Turnover of a Sub-System to Operation)						Category "C" Punch List Items (Faults that can be corrected after Turnover to Operation)					
	Created		Completed		Remaining		Created		Completed		Remaining		Created		Completed		Remaining	
	Today	Total (Cummm)	Closed Today	Last 7 days (Cummm)	Total (Cummm)	Items to Close	Today	Total (Cummm)	Closed Today	Last 7 days (Cummm)	Total (Cummm)	Items to Close	Today	Total (Cummm)	Closed Today	Last 7 days (Cummm)	Total (Cummm)	Items to Close
Civil	0	468	0	1	262	206	0	481	0	2	224	257	0	1597	0	1	1075	522
Electrical	13	3957	6	39	3235	72	2	3507	14	60	2498	1009	0	2154	5	15	848	1306
HVAC	0	421	0	3	392	29	0	284	9	40	228	56	0	217	4	23	183	34
Instrument	1	1696	10	63	1514	182	0	2204	8	50	1778	426	4	1291	0	34	775	516
Insulation	0	7	0	1	1	6	0	0	0	0	0	0	0	2	0	0	0	2
Mechanical	0	737	13	49	575	162	0	403	2	19	245	158	0	236	1	6	98	138
Piping	0	1026	4	41	906	120	0	726	9	63	525	201	0	770	0	11	352	418
Safety	0	59	0	8	59	0	0	62	0	6	34	28	0	53	0	0	4	49
Telcom	0	228	0	1	93	135	1	251	0	0	127	124	0	44	0	0	16	28
<b>Grand Total</b>	<b>14</b>	<b>8599</b>	<b>33</b>	<b>206</b>	<b>7037</b>	<b>1562</b>	<b>3</b>	<b>7918</b>	<b>42</b>	<b>240</b>	<b>5659</b>	<b>2259</b>	<b>4</b>	<b>6364</b>	<b>10</b>	<b>90</b>	<b>3351</b>	<b>3013</b>

#### OVERALL ITRs AND CERTIFICATION SUMMARY STATUS

Document Type	Total Populated	Total Completed	Total Remaining	Overall % Compl.	Completed Today	Completed Last 7 Days
Total QITR + MC Check Sheets Completed	84140	56935	27205	67.67%	255	1118
SMCC Completed - Full	903	340	563	37.65%	1	10
SMCC Completed - Partial	87	57	30	65.52%	0	0
STNC Completed	902	176	726	19.51%	1	7

Notes:  
 A. Quality Inspection Test Records (QITR) Status contains the following: Tagged item QITRs, & Electrical Circuit QITRs  
 B. Mechanical Completion Check Sheets status contains the following: Tagged item "A" Check Sheets, Electrical Circuit "A" Check Sheets, Piping Test Pack "A" Check Sheets & VITR ("A" Check Sheets completed at Clegon)  
 C. Static Commissioning Check Sheets (SC Check Sheets) status contains the following: Tagged item SC Check Sheets, Electrical Circuit SC Check Sheets, Piping Test Pack SC Check Sheets & Instrument Loop SC Check Sheets

Subsystem SMCC Completed Today: 983-00 MP Steam  
 STNC Completed Today: 863-24 Normal Lighting River Water Intake Substation (OB-4S)

## World Class Functionality Proven over Multiple Projects

The screenshot displays the Zenator Live software interface. On the left, the 'Bulk Tag Management' window is open, showing filters for Project (Sabre Live Demo), Discipline, and various tag types. Below this is a table of tag details with columns for Tag Number, Tag Name, Parent Name, Parent Node Type, Discipline, Tag Type Main, Tag Type, and Serial. The main window shows a tree view of project groups and nodes, with a legend on the right defining node types like A ITR, B ITR, C ITR, V ITR, and Area ITR, each with corresponding icons and status indicators.